

# Linear stability of horizontal, laminar fully developed, quasi-two-dimensional liquid metal duct flow under a transverse magnetic field and heated from below

Tony Vo,<sup>1</sup> Alban Pothérat,<sup>2</sup> and Gregory J. Sheard<sup>1,\*</sup>

<sup>1</sup>*The Sheard Lab, Department of Mechanical and Aerospace Engineering,  
Monash University, Victoria 3800, Australia*

<sup>2</sup>*Applied Mathematics Research Centre, Coventry University, Priory Street,  
Coventry CV15FB, United Kingdom*

(Received 21 June 2016; published 10 March 2017)

This study considers the linear stability of Poiseuille-Rayleigh-Bénard flows subjected to a transverse magnetic field, to understand the instabilities that arise from the complex interaction between the effects of shear, thermal stratification, and magnetic damping. This fundamental study is motivated in part by the desire to enhance heat transfer in the blanket ducts of nuclear fusion reactors. In pure magnetohydrodynamic flows, the imposed transverse magnetic field causes the flow to become quasi-two-dimensional and exhibit disturbances that are localized to the horizontal walls. However, the vertical temperature stratification in Rayleigh-Bénard flows feature convection cells that occupy the interior region, and therefore the addition of this aspect provides an interesting point for investigation. The linearized governing equations are described by the quasi-two-dimensional model proposed by Sommeria and Moreau [*J. Fluid Mech.* **118**, 507 (1982)], which incorporates a Hartmann friction term, and the base flows are considered fully developed and one-dimensional. The neutral stability curves for critical Reynolds and Rayleigh numbers,  $Re_c$  and  $Ra_c$ , respectively, as functions of Hartmann friction parameter  $H$  have been obtained over  $10^{-2} \leq H \leq 10^4$ . Asymptotic trends are observed as  $H \rightarrow \infty$  following  $Re_c \propto H^{1/2}$  and  $Ra_c \propto H$ . The linear stability analysis reveals multiple instabilities which alter the flow both within the Shercliff boundary layers and the interior flow, with structures consistent with features from plane Poiseuille and Rayleigh-Bénard flows.

DOI: [10.1103/PhysRevFluids.2.033902](https://doi.org/10.1103/PhysRevFluids.2.033902)

## I. INTRODUCTION

The liquid lithium flowing within the ductwork of proposed tritium breeder modules of magnetic confinement fusion reactors presents an exciting example of confined duct flows combining thermal and velocity shear destabilization processes with magnetohydrodynamic (MHD) effects. In this application, the strong magnetic field is transverse to the duct and two-dimensionalizes the flow, while both MHD and viscous effects act to damp fluctuations, inhibiting heat transport. While configurations for liquid metal blankets in fusion reactors considered in recent times use poloidal ducts (e.g., [1]) where flows are predominantly vertical, the present study investigates the fundamental problem of the stability of horizontal quasi-two-dimensional MHD duct flow with vertical heating, thus serving as an extension of the classical Poiseuille-Rayleigh-Bénard flow to quasi-two-dimensional flows under the model of Sommeria and Moreau [2]. Understanding the stability of these flows underpins endeavors to enhance heat transfer in these duct flows via convective mixing.

The primary nondimensional parameters that characterize Poiseuille-Rayleigh-Bénard flows are the Reynolds number  $Re$ , Rayleigh number  $Ra$ , and Prandtl number  $Pr$ . These parameters respectively

---

\*greg.sheard@monash.edu

characterize the ratios of inertial to viscous forces, buoyancy to viscous and thermal forces, and momentum diffusivity to thermal diffusivity. It is well known that Rayleigh-Bénard flow bounded by no-slip horizontal boundaries (rigid-rigid) develops convection rolls at critical Rayleigh number  $Ra_c = 1708$  (with the depth of the fluid as the characteristic length scale) [3]. Due to the infinite extent of the system, the convection rolls have no directional preference. However, an imposed through-flow results in the selection of longitudinal rolls as opposed to transverse rolls at onset. This result is supported by Gage and Reid [4], who performed linear stability analysis on a thermally stratified Poiseuille flow and has been observed experimentally in large aspect ratio configurations (e.g., [5–7]). The stability of Poiseuille-Rayleigh-Bénard flows has been studied extensively, uncovering a rich variety of thermoconvective instabilities including longitudinal and transverse rolls, mixed rolls, wavy rolls, and oscillating rolls (e.g., [8–13]).

Although longitudinal rolls are dominant in Poiseuille-Rayleigh-Bénard flows in infinite aspect ratio domains, it is possible for transverse rolls to be more unstable than longitudinal rolls in finite aspect ratio channels [10,14]. This is relevant to applications involving a strong transverse magnetic field due to the suppression of longitudinal structures. The liquid metal flow in rectangular blanket ducts surrounding the plasma can therefore be considered as an extension of Poiseuille-Rayleigh-Bénard flow via the incorporation of MHD effects. Such flows have been motivated by the need to demonstrate the viability of nuclear fusion as an energy source. Specifically, the stability (e.g., [15–18]) and heat transfer properties of a liquid metal flow are of great importance to the future designs of experimental fusion reactors where maximizing heat transfer is a key criterion. The enhancement of heat transfer and instability growth in MHD flows can be achieved by implementing turbulent promoters such as bluff bodies [19–21] and current injection [22]. However, physical modifiers are not always practicable and therefore the characterization of flow instabilities is required. Although the stability results of the horizontal duct presented herein are limited in their relevance to recent poloidal liquid metal blanket duct designs (e.g., [1]), they provide fundamental insights into the stability of a flow influenced by thermal and shear effects.

In three-dimensional MHD duct flows both the Hartmann and Shercliff boundary layers play a significant role in determining the stability of the flow. These layers form on the walls perpendicular and parallel to the magnetic field, respectively. However, the study of a three-dimensional domain is computationally expensive. The system can be simplified to two dimensions by assuming that the imposed magnetic field is sufficiently strong and therefore described adequately using a quasi-two-dimensional model developed by Sommeria and Moreau [2] (referred to as the SM82 model hereafter). This model considers solutions in the plane perpendicular to the magnetic field. That is, only the Shercliff layers are resolved while the frictional effects of the Hartmann layers in the out-of-plane direction are integrated across the depth of the duct and modeled through an added Hartmann friction term.

The stability of a MHD duct flow to quasi-two-dimensional perturbations under a transverse magnetic field, without consideration of thermal stratification, has been investigated previously by Pothérat [15]. It was found that the critical modes of linear instability are Tollmien-Schlichting waves. An asymptotic regime was observed for  $H \gtrsim 200$  with neutral stability curves described by critical Reynolds number and streamwise wavenumber,  $Re_c = 4.83504 \times 10^4 H^{1/2}$  and  $k_c = 0.161532 H^{1/2}$ , respectively. The same study also investigated the stability of the system through an energy analysis. A lower threshold of stability defined by  $Re_c = 65.3288 H^{1/2}$  with corresponding  $k_c = 0.863484 H^{1/2}$  was established. Thus, according to both analyses the stability of the system in the limit of  $H \rightarrow \infty$  is determined only by the thickness of the Shercliff layer, which scales according to  $\delta_S \propto 1/H^{1/2}$ . That is, the stability of quasi-two-dimensional MHD flows are governed solely by the Shercliff layers.

Besides advantages in terms of simplicity and computational costs, the physical representation based on the two-dimensional Navier-Stokes equation with linear friction extends the relevance of our analysis to a number of other physical problems described by this equation: rapidly rotating flows [23,24] and plane flows with parabolic profiles subjected to Rayleigh friction [25]. In the case of MHD flows, high friction parameters are relevant to ducts under strong magnetic fields

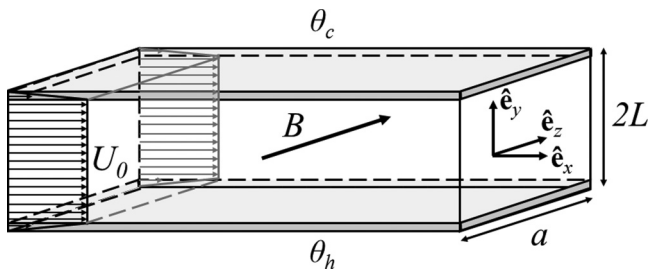


FIG. 1. A schematic diagram of the system under investigation. The key dimensions are the duct height  $2L$ , duct width  $a$ , magnetic field  $B$ , and the maximum velocity  $U_0$ . The variables  $(\hat{e}_x, \hat{e}_y, \hat{e}_z)$  represent unit vectors in the  $(x, y, z)$  directions, respectively. The liquid metal flows in the positive- $x$  direction while the magnetic field acts in the  $z$  direction. Temperatures  $\theta_h$  (hot) and  $\theta_c$  (cold) are imposed on the bottom and top duct walls, respectively. Shaded regions represent the Shercliff boundary layers.

(as in fusion applications), whereas low friction parameters could be experimentally achieved in thin quasi-two-dimensional layers of fluids (such as Hele-Shaw cells submitted to high spanwise magnetic field, in the spirit of Krasnov *et al.* [26]).

Zikanov *et al.* [27] studied MHD flow in a pipe with the lower half of the wall heated and subjected to a transverse magnetic field. Linear stability analysis and direct numerical simulations confirm the existence of convection structures at high  $H$ . This verifies experimental observations of temperature fluctuations being suppressed as  $H$  is increased, but reemerging as  $H$  is further increased due to secondary flows [28,29]. These results are not limited to the pipe geometry as they have also been detected in duct flows (e.g., [30,31]). Recently, Zhang and Zikanov [31] used direct numerical simulations to observe two types of secondary flows in horizontal duct flows: one which is dominated by quasi-two-dimensional spanwise rolls and another which is characterized by a combination of streamwise and spanwise rolls.

The focus of this paper is on the stability of flows through electrically insulated ducts subjected to a transverse magnetic field and a vertical heating gradient, as modeled by the SM82 model with a Boussinesq approximation. Linear stability analysis on the basic velocity and temperature solutions over a large range of  $Re$ ,  $Ra$ , and  $H$  are reported. Thus, this may be considered an extension of the research of Poth erat [15] through the introduction of natural convection effects, and as an extension of classical Poiseuille-Rayleigh-B enard instability via incorporation of MHD effects through the SM82 model. The remaining sections of this paper are organized as follows. The methodology is presented in Sec. II, which includes a description of the system, the governing equations and parameters, and the linear stability analysis solver and its validation. Results are discussed in Sec. III with attention to neutral stability curves for various fixed  $Re$  flows and fixed  $Ra$  flows separately. Last, the key conclusions of this study are outlined in Sec. IV.

## II. METHODOLOGY

### A. Problem formulation

The system studied in this paper represents an electrically conducting fluid with kinematic viscosity  $\nu$ , thermal diffusivity  $\kappa$ , volumetric expansion coefficient  $\alpha$ , density  $\rho$ , and electrical conductivity  $\xi$ , flowing through a horizontal rectangular duct of height  $2L$  and width  $a$ , exposed to a transverse magnetic field of strength  $B$  and a vertical temperature gradient. The schematic of the system is shown in Fig. 1. The duct walls are electrically insulated. Provided that the imposed transverse magnetic field is sufficiently strong relative to the through-flow, the flow solution can be described accurately by a quasi-two-dimensional model [2]. This is a result of the magnetic field suppressing motions and gradients parallel to the magnetic field in the interior of the flow. It should be noted that the Hartmann boundary layers that develop along the out-of-plane duct walls can

become unstable despite the effects of a strong transverse magnetic field. Linear stability analyses have revealed that the stability of Hartmann layers can be described by a Reynolds number based on the Hartmann layer thickness (i.e.,  $\text{Re}_{\text{Ha}} = \text{Re}/\text{Ha}$ ). Numerous different critical  $\text{Re}_{\text{Ha}}$  have been obtained in previous studies with values ranging from  $\text{Re}_{\text{Ha}} = 48311.016$  [32], to  $\text{Re}_{\text{Ha}} = 50000$  [33]. However, destabilization of the Hartmann layer is known to be subcritical, and transition to turbulence in fact takes place at  $\text{Re}_{\text{Ha}} \simeq 380$  [34]. This study assumes that the Hartmann layers are laminar and therefore can be described by the SM82 model. This model is particularly well suited to linear stability analyses as it achieves maximum precision in the limit of vanishing inertia [35]. Derivation and details of the SM82 model can be found in Sommeria and Moreau [2].

### B. Governing equations and parameters

The SM82 equations are coupled with a thermal transport equation through a Boussinesq approximation to describe the MHD duct flow with vertical thermal stratification (i.e.,  $\text{Re} > 0$ ,  $\text{Ra} > 0$ ). These equations are given in the nondimensional form as

$$\frac{\partial \mathbf{u}}{\partial t} + (\mathbf{u} \cdot \nabla) \mathbf{u} = -\nabla p + \frac{1}{\text{Re}} \nabla^2 \mathbf{u} - \frac{H}{\text{Re}} \mathbf{u} + \frac{\text{Ra}}{\text{Pr Re}^2} \theta \hat{\mathbf{e}}_y, \quad (1a)$$

$$\frac{\partial \theta}{\partial t} + (\mathbf{u} \cdot \nabla) \theta = \frac{1}{\text{Pr Re}} \nabla^2 \theta, \quad (1b)$$

$$\nabla \cdot \mathbf{u} = 0, \quad (1c)$$

where  $\mathbf{u}$  is the velocity vector,  $t$  is time,  $p$  is pressure, and  $\mathbf{g}$  is the gravitational acceleration acting in the negative  $y$  direction. These equations are obtained by normalizing lengths by  $L$ , velocity by  $U_0$  (the maximum velocity of the base flow profile), time by  $L/U_0$ , pressure by  $\rho U_0^2$  and temperature by  $\Delta\theta$ . Here,  $\hat{\mathbf{e}}_y$  is a unit vector in positive  $y$  direction. The nondimensional parameters  $\text{Re}$  (Reynolds number),  $\text{Ra}$  (Rayleigh number),  $H$  (modified Hartmann number), and  $\text{Pr}$  (Prandtl number) are respectively defined as

$$\text{Re} = \frac{U_0 L}{\nu}, \quad (2a)$$

$$\text{Ra} = \frac{\alpha g L^3 \Delta\theta}{\nu \kappa}, \quad (2b)$$

$$H = n \text{Ha} \left( \frac{L}{a} \right)^2, \quad (2c)$$

$$\text{Pr} = \frac{\nu}{\kappa}, \quad (2d)$$

where  $\Delta\theta$  is the temperature difference between the bottom (hot) and top (cold) walls ( $\theta_h - \theta_c$ ),  $n = 2$  is the number of Hartmann layers on out-of-plane walls imparting friction on the quasi-two-dimensional flow, and  $\text{Ha}$  is the Hartmann number  $\text{Ha} = a B \sqrt{\xi}/(\rho \nu)$  whose square describes the relative influence of magnetic to viscous forces on the flow. The Prandtl number (ratio of momentum diffusivity to thermal diffusivity) is fixed at  $\text{Pr} = 0.022$  to represent the eutectic liquid metal alloy Galinstan (GaInSn) that is used in a number of modern MHD experiments [36]. It should be mentioned that the SM82 model is typically valid for  $\text{Ha} \gg 1$ ,  $N = \text{Ha}^2/\text{Re} \gg 1$ , and  $\text{Re}/\text{Ha} \lesssim 380$  [2,34,37,38].

The present study includes analysis conducted at small  $H$  where the SM82 model may be invalid. Generally speaking, the SM82 model describes a two-dimensional incompressible fluid flow with a linear friction term. Beyond the MHD applications satisfying the SM82 model, other flows may adopt the same model form where an additional forcing term describes the out-of-plane effects imparted onto the two-dimensional flow. One example is the quasigeostrophic model which incorporates a forcing term to describe the frictional effects induced by the Ekman layers (e.g., [23,24]) of the form

$\tau_E = (a^2/\nu)E^{1/2}$ , where the Ekman number  $E$  represents the ratio of Coriolis to viscous forces. The linear term can also represent the Rayleigh friction in plane shallow water flows with a parabolic velocity profile between the planes, of dimensional characteristic friction time  $\tau_F = 4a^2/(\pi^2\nu)$ . Interestingly, this case is recovered both from the quasigeostrophic model and from the SM82 model for moderate Reynolds numbers and in the limits  $\text{Ha} \rightarrow 0$  and  $E \rightarrow \infty$  where the flows lose their quasi-two-dimensionality under the effect of viscous friction. In all these cases, although the most obvious relevance of the SM82 model is to quasi-two-dimensional flows at large  $H$ , it must be kept in mind that since  $H$  is of the form  $H = n\text{Ha}(L/a)^2$ , moderate values of  $H$  still satisfy  $\text{Ha} \gg 1$  in Hele-Shaw cell geometries with a spanwise magnetic field [i.e.,  $(L/a) \gg 1$ ]. In particular, the stability properties of the SM82 model at low  $H$  in Poth erat [15] provide evidence of transient growth in channels with spanwise magnetic fields in the range of  $\text{Ha}$  that is computationally difficult to reach with a three-dimensional approach [26]. This geometry lends itself well to experiments in large solenoidal magnets. This possibility remains to be explored and could elucidate the open problem of the transition to turbulence in MHD channel flows with spanwise magnetic fields. For these reasons the full range of values of  $H$  from zero to infinity deserves to be explored, even though our prime motivation remains for regimes of high  $H$  relevant to fusion.

The horizontal walls ( $y = 0, 2L$ ) adopt no-slip conditions and are electrically insulated. Under these conditions, the base flow solutions for velocity  $\bar{\mathbf{u}} = \bar{u}(y)\hat{\mathbf{e}}_x$  and temperature  $\bar{\theta}(y)$  are fully developed and are expressed as

$$\bar{u}(y) = \begin{cases} 1 - y^2 & \text{for } \text{Re} > 0, H = 0, \\ \left( \frac{\cosh(\sqrt{H})}{\cosh(\sqrt{H}) - 1} \right) \left( 1 - \frac{\cosh(\sqrt{H}y)}{\cosh(\sqrt{H})} \right) & \text{for } \text{Re} > 0, H > 0, \end{cases} \quad (3)$$

$$\bar{\theta}(y) = \frac{1 - y}{2} \quad \text{for } \text{Ra} > 0. \quad (4)$$

The base velocity and temperature profiles are zero everywhere for  $\text{Re} = 0$  and  $\text{Ra} = 0$ , respectively. The plane Poiseuille flow and the classical Rayleigh-B enard problems are recovered for  $H = 0$ ,  $\text{Ra} = 0$  and  $H = 0$ ,  $\text{Re} = 0$ , respectively. The governing equations and corresponding scales for these cases are presented in the Appendix.

### C. Linear stability analysis

The governing equations are linearized by decomposing velocity, temperature, and pressure solutions into the mean (base flow denoted by an overbar) and fluctuating components (perturbation denoted by a prime). Due to the translational invariance of the problem in the  $x$  direction, the perturbations are waves traveling in the  $x$  direction:

$$f' = \delta \tilde{f}(y)e^{i(kx - \omega t)}, \quad (5)$$

where  $f$  is any of  $u$ ,  $v$ ,  $p$ , or  $\theta$ . Here,  $\delta$  is taken to be a small parameter,  $k$  is the streamwise wavenumber,  $\omega$  is the complex eigenvalue, and the tilde components ( $\tilde{u}, \tilde{v}, \tilde{p}, \tilde{\theta}$ ) are eigenfunctions. Substituting these expressions into Eq. (1) (for  $\text{Re} > 0$ ,  $\text{Ra} > 0$ ) and retaining the terms up to order  $\mathcal{O}(\delta)$  at most yields

$$\frac{1}{\text{Re}}(\text{D}^2 - k^2)^2 \tilde{v} + ik\tilde{u}''\tilde{v} - ik\tilde{u}(\text{D}^2 - k^2)\tilde{v} - \frac{H}{\text{Re}}(\text{D}^2 - k^2)\tilde{v} - \frac{\text{Ra}}{\text{Re}^2\text{Pr}}k^2\tilde{\theta} = -i\omega(\text{D}^2 - k^2)\tilde{v}, \quad (6a)$$

$$-\tilde{\theta}'\tilde{v} - ik\tilde{u}\tilde{\theta} + \frac{1}{\text{Re Pr}}(\text{D}^2 - k^2)\tilde{\theta} = -i\omega\tilde{\theta}, \quad (6b)$$

where  $\text{D}$  is the differentiation operator with respect to  $y$ . A zero Dirichlet boundary condition is imposed on the perturbation fields (directly on  $\tilde{v}$  and  $\tilde{\theta}$  as part of the eigenvalue problem, and on  $\tilde{u}$  and  $\tilde{p}$  during its reconstruction). The linearized equations are limited to transverse rolls since

longitudinal rolls are outside the scope of the SM82 model and therefore not considered in this study.

#### D. Numerical procedure and validation

The code we use has been successfully implemented for one-dimensional stability analysis of a flow driven by horizontal convection [39]. It is based on several numerical methodologies described by Trefethen [40], Weideman and Reddy [41], and Schmid and Henningson [42], and is briefly recalled in this section.

The flow solutions are discretised in the  $y$  direction using Chebyshev collocation points. To ensure that the Shercliff layers are sufficiently resolved, testing revealed that the number of points needed to exceed  $N = \max(100, 50H^{1/4})$ . This criterion ensures that the solution is grid-independent and maintains at least 10 collocation points in each Shercliff layer, consistent with Pothérat [15] for the range of  $H$  investigated here. Thus, the condition of  $N \geq \max(100, 50H^{1/4})$  is adopted throughout this study. For example,  $N = [100, 159, 282, 500]$  for  $H = [0, 10^2, 10^3, 10^4]$ , respectively.

The linearized governing equations are treated as an eigenvalue problem with the eigenvectors

$$\phi = \begin{bmatrix} \tilde{v} \\ \tilde{\theta} \end{bmatrix}. \quad (7)$$

The corresponding instability modes are recovered using Eq. (5) while the functions  $\tilde{u}$  and  $\tilde{p}$  can be recovered from the continuity and momentum equations, respectively. The complex eigenvalues of the problem are represented by  $\omega$ .

The imaginary component of leading eigenvalue  $\omega$  represents the growth rate  $\sigma$  of the instability for a specific streamwise wavenumber  $k$ . A MATLAB eigenvalue solver is used to obtain the leading eigenvalues and corresponding eigenvectors for Eq. (6) ( $\text{Re} > 0, \text{Ra} > 0$ ). The outputs from the solver were found to be more consistent and generated smaller errors when the generalized eigenvalue problem was posed in the standard form

$$(\mathcal{B}^{-1}\mathcal{A})\phi = \omega\phi, \quad (8)$$

following McBain *et al.* [43]. The leading eigenvalue recovered by the present code for  $\text{Re} = 10^4$ ,  $\text{Ra} = 0$ ,  $H = 0$ , and  $k = 1$  agrees very well with the studies tabulated in McBain *et al.* [43] to at least eight significant figures.

The growth rates over  $1.01 \leq k \leq 1.03$  for plane Poiseuille flow at the critical Reynolds number  $\text{Re}_c = 5772.22$  have been obtained using generalized and standard forms, and are plotted in Fig. 2(a). In addition to its superior accuracy, solutions using the standard form converged with a much shorter compute time than the generalised form. Thus, all results presented in this study are obtained by solving the eigenvalue problem in standard form unless otherwise specified.

We also recovered the three-branch structure of the corresponding eigenvalue spectrum, in excellent agreement with Mack [44] [see Fig. 2(b)]. The branches are labeled A, P, and S [42]. The S branch is found to bifurcate at lower  $\text{Im}\{\omega\}$  values as illustrated in the inset panel. This behavior was also identified by Pothérat [15] for MHD flows. The leading eigenvalue is highlighted by the solid symbol and is observed on the A branch. The A and P modes are sometimes referred to as the wall and center modes, respectively [42]. Thus, the unstable mode for plane Poiseuille flow is a wall mode described by a Tollmien-Schlichting wave.

The critical conditions for Rayleigh-Bénard flow is found to be  $\text{Ra}_c = 213.47$  (equivalent to  $\text{Ra}_c = 1707.76$  using the traditional scaling where the full duct height is used as the length scale, as opposed to half the duct height used in the present study) with a corresponding  $k_c = 1.5582$  (equivalent to  $k_c = 3.1164$  based on full duct height scaling). These values are in excellent agreement with  $\text{Ra}_c = 1708$  and  $k_c = 3.117$ , which are often quoted to four significant figures in previous literature [3,45,46]. The eigenvalue spectrum for Rayleigh-Bénard flow is shown in Fig. 2(c) and exhibits a vertical branch situated at very small phase velocities; values less than the precision of the present code and therefore considered to be zero. This suggests that the instability is nonpropagating,

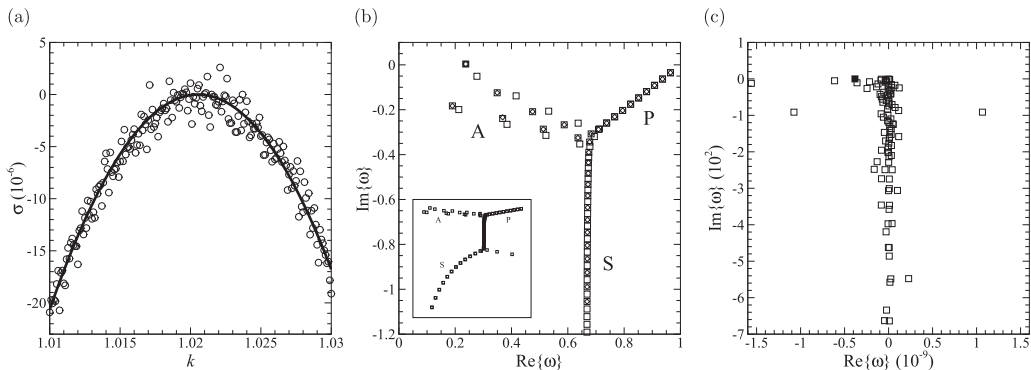


FIG. 2. (a) Growth rates as a function of wavenumber at  $\text{Re} = 5772$  solved in the standard form (piecewise line segments connecting each computed point) and the generalized form ( $\circ$ ). The same set of wavenumbers are solved in both cases. (b) Eigenvalue spectrum for Poiseuille flow ( $\text{Re} = 10^4, \text{Ra} = 0, H = 0$ ) displaying a comparison between the eigenvalues obtained for the present study ( $\square$ ) and Mack [44] ( $\diamond$ ). Note that additional eigenvalues are displayed for the present study. The inset displays the same eigenvalue spectrum with the inclusion of smaller  $\text{Im}\{\omega\}$  eigenvalues. (c) Eigenvalue spectrum for Rayleigh-Bénard flow ( $\text{Re} = 0, \text{Ra} = 250, H = 0$ ). The solid symbol represents the leading eigenvalue.

which is consistent with the steady (nonoscillatory) modes predicted at the onset of Rayleigh-Bénard convection [46].

In the present study, there are three governing parameters ( $\text{Re}, \text{Ra}, H$ ). Therefore, to begin searching for the critical conditions, two of the three governing parameters are fixed while the third parameter is varied to seek  $\sigma = \text{Im}\{\omega\} = 0$ . The flow condition is considered to be critical once the varying parameter (either  $\text{Re}_c, \text{Ra}_c$ , or  $H_c$ ) and corresponding growth rate have converged to at least five significant figures.

### III. RESULTS AND DISCUSSION

This section discusses the neutral stability curves obtained for  $\text{Re}_c$  and  $\text{Ra}_c$  as a function of  $H$ , for  $10^{-2} \leq H \leq 10^4$ . Neutral stability curves for the special cases with  $\text{Re} = 0$  and  $\text{Ra} = 0$  are presented first, and  $\text{Ra}_c$  and  $\text{Re}_c$  are subsequently sought for positive  $\text{Re}$  and  $\text{Ra}$ , respectively.

#### A. Stability for $\text{Re} = 0$ or $\text{Ra} = 0$

The neutral stability curve for  $\text{Ra} = 0$  is shown in Fig. 3(a). Above and below the curve are unstable and stable flows, respectively. An excellent agreement in  $\text{Re}_c$  values between the present study and that of Pothérat [15] can be seen, with a maximum percentage error of less than 0.1% across the range of  $10^{-2} \leq H \leq 10^4$ . The curve demonstrates that  $\text{Re}_c$  increases monotonically with increasing  $H$ , which is due to a stronger through-flow being required to counteract the increased damping induced by the increased magnetic field strength. As  $H \rightarrow 0$ , the flow becomes purely hydrodynamic and achieves the expected instability to Tollmien-Schlichting waves at  $\text{Re}_c = 5772.22$ . As  $H \rightarrow \infty$ , the onset of instability is described by an asymptotic trend regime  $\text{Re}_c = 48347H^{1/2}$  for  $H \gtrsim 200$  governed by the Shercliff layers.

Similar to the  $\text{Ra} = 0$  case, the neutral stability curve for the  $\text{Re} = 0$  case of natural convection with no through-flow is unique and continuous, as shown in Fig. 3(b). As  $H \rightarrow 0$ , the flow reverts to classical plane Rayleigh-Bénard flow and the perturbations are controlled by the balance between buoyancy and viscous dissipation, with  $\text{Ra}_c = 213.47$  ( $H = 0$ ). However, as  $H \rightarrow \infty$  the neutral stability curve approaches a scaling of  $\text{Ra}_c = (21.672 \pm 0.212)H^{(0.991 \pm 0.001)}$  for  $2000 \leq H \leq 10^4$ . The uncertainties presented throughout this paper correspond to the standard error (estimated standard deviation) of the least-squares estimates using linear regression for the coefficients and

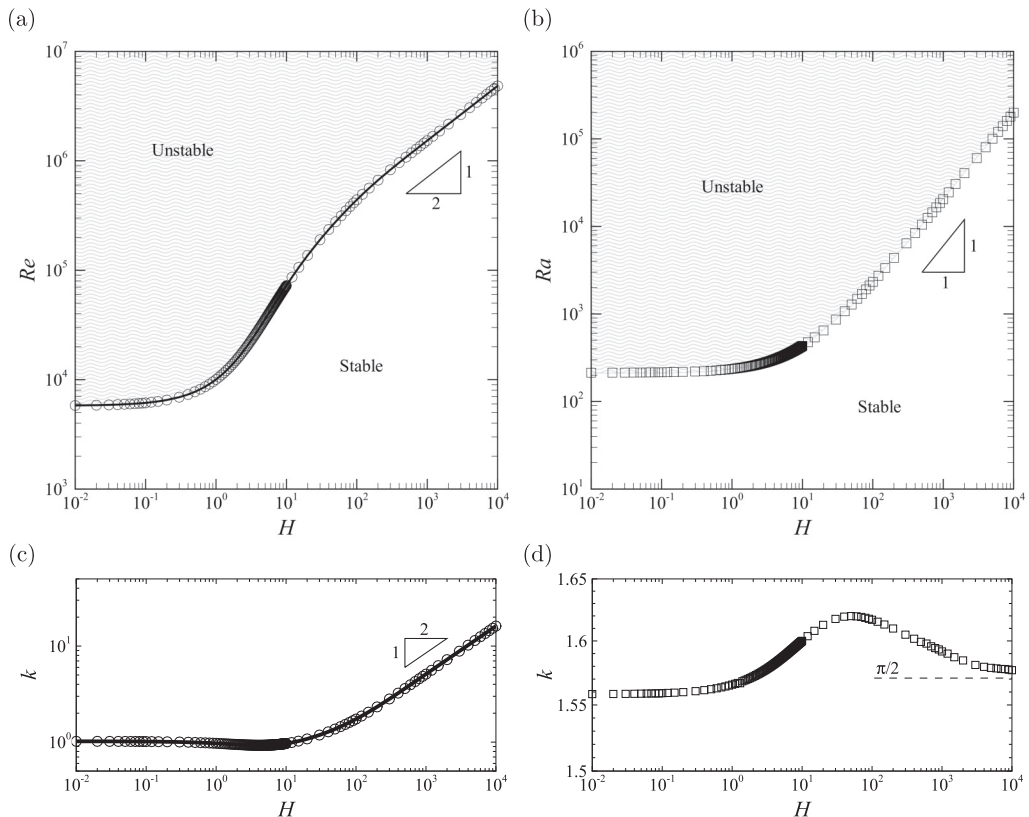


FIG. 3. Neutral stability curves of (a)  $Re_c$ , (b)  $Ra_c$ , and (c)  $k_c$  as a function of  $H$  for  $Ra = 0$  ( $\circ$ ) and  $Re = 0$  ( $\square$ ). The solid lines in (a) and (c) are from Pothérat [15] and the dashed line in (d) is for  $k = \pi/2$ . Shaded regions represent the unstable flow conditions.

exponents, and are only provided if the uncertainty is greater than 0.01%. It is expected here that the exponent  $0.991 \pm 0.001$  will approach unity as  $H \rightarrow \infty$ . It may be understood as follows: in the limit  $H \rightarrow \infty$ , Hartmann friction dominates and has to be balanced by buoyancy for convection to set in. Hence, at the onset the balance between these forces implies  $Ra \sim H$ , which scales with the duct height  $2L$ . This scaling is in agreement with the linear stability analysis performed by Burr and Müller [47] who studied Rayleigh-Bénard convection in liquid metal layers under the influence of a horizontal magnetic field. This linear scaling was also obtained by Mistrangelo and Bühler [48] who studied the stability of a motionless basic steady-state solution induced by a parabolic temperature distribution.

The critical wavenumber  $k_c$  for both  $Ra = 0$  and  $Re = 0$  is shown in Figs. 3(c) and 3(d), respectively. For  $Ra = 0$ ,  $k_c = 1.02$  at low  $H$  and adopts an asymptotic trend at high  $H$  of the form  $k_c = 0.1615H^{1/2}$ . In contrast, the critical wavenumber for  $Re = 0$  remains relatively constant across all  $H$ . As  $H \rightarrow 0$ ,  $k_c \rightarrow 1.5582$ ; and as  $H \rightarrow \infty$ , the critical wavenumber appears to approach  $k_c = \pi/2$ . These values are in agreement with the asymptotic values from Burr and Müller [47]. These authors also observed an unexpected maximum at  $H \approx 60$ . It is unclear why there is an increase in wavenumber at the onset of Rayleigh-Bénard convection cells in this intermediate regime where the flow transitions from a buoyancy-viscous dissipation balance to a buoyancy-Hartmann friction balance. However, the increase in  $k$  with increasing  $H$  has been observed experimentally using shadowgraph visualization [49]. The streamwise wavenumber scaling for both  $Re = 0$  and  $Ra = 0$



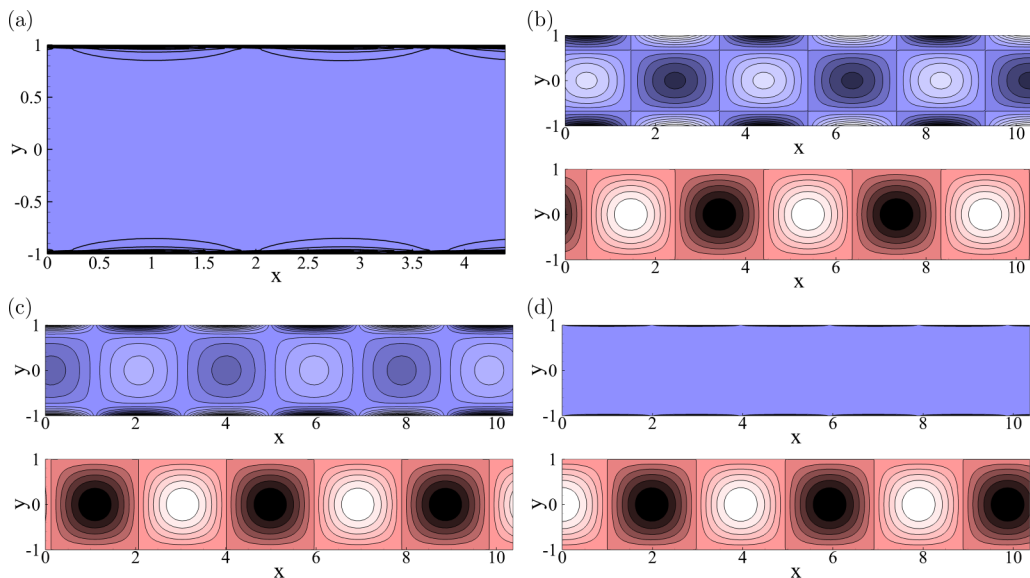


FIG. 4. (a) Vorticity in the eigenvector field of  $Re_c = 440223$ ,  $Ra = 0$ ,  $H = 100$  for  $k_c = 1.7393$ . Vorticity (top panel) and temperature (bottom panel) in the eigenvector fields of (b)  $Re = 0$ ,  $Ra_c = 432.79$ ,  $H = 10$  for  $k_c = 1.6001$ , (c)  $Re = 0$ ,  $Ra_c = 2322.66$ ,  $H = 100$  for  $k_c = 1.6169$ , and (d)  $Re = 0$ ,  $Ra_c = 199513.4$ ,  $H = 1 \times 10^4$  for  $k_c = 1.5929$ . Dark and light shading represent negative and positive values, respectively.

cases as  $H \rightarrow \infty$  supports the view that the instability scales with the Shercliff layer thickness and channel height, respectively.

A typical plot of vorticity in the eigenvector field for  $Re_c$  with  $Ra = 0$  and  $H = 100$  is illustrated in Fig. 4(a). The instability caused by the shearing through-flow is localized along the horizontal walls in the boundary layers. Further increasing  $H$  only results in thinner Shercliff layers and therefore shrinking of the region occupied by perturbation [Fig. 4(d)]. For all  $H$ , the leading eigenvalue was consistently found to lie on the A branch, in agreement with Poth erat [15]. For the case of heating and no through-flow (i.e.,  $Ra_c$  with  $Re = 0$ ), the vorticity perturbations occupy both regions along the walls and throughout the interior of the duct as shown in Fig. 4(b) (top panel) for  $H = 10$ . The interior vorticity disturbances are evident only at relatively low  $H$  as the strength of the counter-rotating Rayleigh-B enard-like cells are comparable to the wall disturbances. The vorticity and thermal perturbation fields at low, moderate, and high  $H$  are shown in Figs. 4(b)–4(d), respectively. Despite the disappearance of vorticity disturbances in the interior, the structure of the thermal disturbances appears to depend little on  $H$ . The eigenvalue spectrum for each case is very similar to that shown in Fig. 2(c) since the same instability is induced at onset.

## B. Critical Rayleigh numbers at finite Reynolds numbers

In this section, the linear stability of the system is investigated for fixed, nonzero Reynolds numbers with natural convection. The results are presented in a progressive manner for  $0 \leq Re \leq 10^5$ . The regimes  $Re \leq 300$  and  $Re \geq 350$  are discussed separately as these ranges correspond to observations of single and multiple instability modes, respectively.

### 1. Critical Rayleigh numbers for $0 < Re \leq 300$

Figure 5(a) shows neutral stability curves for several Reynolds numbers over  $0 \leq Re \leq 300$ . Throughout this range of  $Re$ , the neutral stability curves maintain their continuous profiles with slight changes with increases in  $Re$ . These curves reveal that  $Ra_c$  is Reynolds number dependent

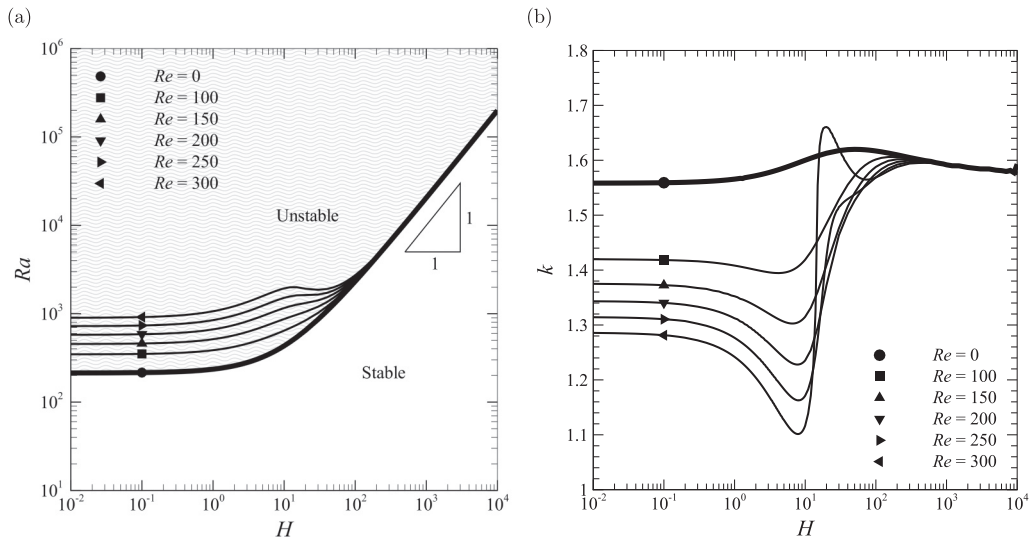


FIG. 5. Neutral stability curves of (a)  $Ra_c$  and (b)  $k_c$  as a function of  $H$  for fixed Reynolds numbers  $0 \leq Re \leq 300$ . Thick solid lines represent  $Re = 0$  while thinner solid lines represent  $100 \leq Re \leq 300$ . The symbols identify the Reynolds number for each curve. The flows are unstable above each curve. The shaded region represents the unstable flow conditions for  $Re = 0$ .

in the limit  $H \rightarrow 0$ , and follows a Reynolds-number-independent linear scaling  $Ra_c = (21.672 \pm 0.212)H^{(0.991 \pm 0.001)}$  as  $H \rightarrow \infty$ . As  $H$  increases, the Hartmann friction becomes the dominant damping process over viscous dissipation acting on the instabilities, and therefore at sufficiently large  $H$  the instability threshold becomes insensitive to the Reynolds number. However, for low to moderate values of  $H$ ,  $Ra_c$  increases with  $Re$ . This suggests that viscous shear flow inhibits the thermal instability: because of the disruption of recirculating convection cells caused by the shear, a stronger thermal gradient is required to overcome the through-flow. This is a well known result [10, 13], demonstrated by experiments by Luijckx *et al.* [14]. More recently, this stabilizing effect was also observed by Hattori *et al.* [50] who investigated the stability of a laterally confined fluid layer induced by absorption of radiation influenced by horizontal through-flow.

The curves of critical wavenumber for  $Re \leq 300$  are shown in Fig. 5(b). Increasing  $Re$  demonstrates a decrease in  $k_c$ , especially at low  $H$  where the onset of instability is governed by a balance between buoyancy and viscous dissipation. The decrease in critical wavenumber is caused by the stronger shear which elongates convection cells. A decrease in critical wavenumber is also observed with increasing  $H$  up to  $H \approx 1$ , beyond which  $k_c$  increases and approaches an asymptotic curve as  $H \rightarrow \infty$ . The increase in  $k$  at intermediate values of  $H$  is related to the change in force balances at the onset of convection cells. At higher  $H$ , the instability is controlled solely by the Hartmann layers and therefore  $k_c$  is independent of  $Re$ . Furthermore, the eigenvector field between  $Re = 0$  and 300 are indistinguishable at  $H = 10^4$ , which confirms that the viscous dissipation has a negligible effect on the instability under a sufficiently strong magnetic field.

The streamwise wavenumber dependence of the critical growth rate with fixed  $Re \leq 300$  and  $H = 10$  is shown in Fig. 6(a). The  $Re = 0$  data exhibit a single maximum. With increasing  $Re$ , a secondary maximum begins to emerge at higher wavenumbers. However, this secondary maximum never becomes unstable in the range of  $0 \leq Re \leq 300$ , as increasing  $Ra$  beyond  $Ra_c$  results in the lower-wavenumber mode absorbing the secondary, higher-wavenumber maximum. Hence, the neutral stability curves for  $Re \leq 300$  are described exactly by the onset of the single instability of the mode  $k = k_c$ , not by the onset of multiple instabilities. The critical wavenumber decreases slightly with the Reynolds number, which is consistent with Fig. 5(b).

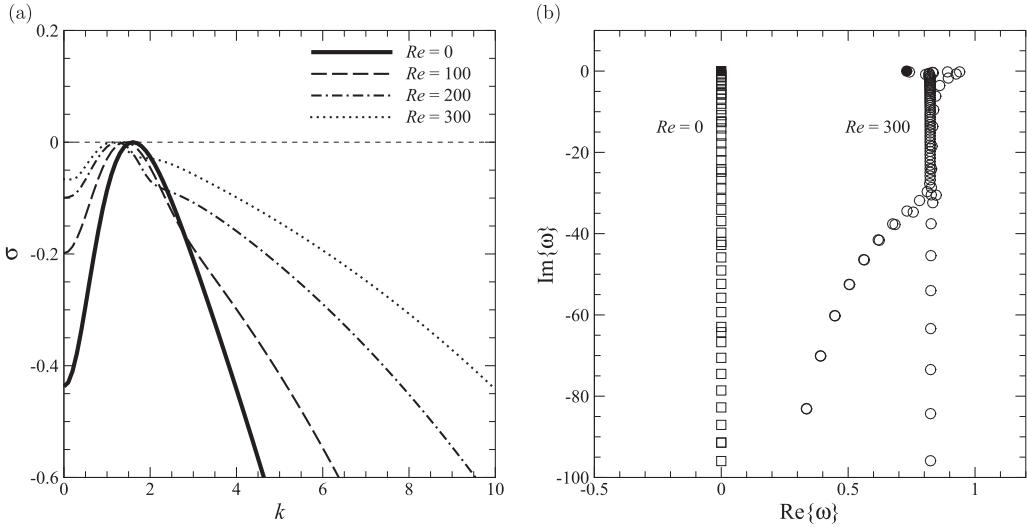


FIG. 6. (a) Growth rate profiles and (b) eigenvalue spectra of the wavenumber of peak growth rate for  $H = 10$  and various  $Re$  with corresponding  $Ra_c$ . The eigenvalue spectra are shown for  $Re = 0$  ( $\square$ ) and  $300$  ( $\circ$ ). The solid symbols denote the leading eigenvalue.

Figure 6(b) presents the eigenvalue spectra corresponding to the wavenumber of the peak growth rate for  $Re = 0$  and  $Re = 300$  at  $Ra_c = 432.793$  and  $Ra_c = 1933.058$ , respectively, for  $H = 10$ . A single vertical branch situated at  $Re\{\omega\} = 0$  is obtained for  $Re = 0$ , while additional branches exist at finite  $Re$  with the leading eigenvalue located on the leftmost branch. Unlike for plane Poiseuille flow, the location of the leading eigenvalue does not solely determine the type of instability mode observed and is instead strongly dependent on both  $Re$  and  $H$ . However, the leading eigenvalue is mostly located to the left of the vertical branch at low  $H$ , and shifts to the right side as  $H$  is increased. Correspondingly, low  $H$  flows demonstrate a mixed mode with disturbances forming in the interior and along the horizontal walls while high  $H$  flows demonstrate dominant wall modes. This is portrayed in Figs. 7(a)–7(c), with the change in eigenvalue spectrum shown in Fig. 7(d). Finally, for all finite  $Re$  considered in this paper, the  $Re\{\omega\}$  of the leading eigenvalue is always nonzero. This seems like an intuitive result. However, Aujogue *et al.* [51] studied the case of magnetoconvection in an infinite plane geometry with rotation and found stationary modes to be the most unstable. The only stationary modes found in this study were of pure Rayleigh-Bénard convection cells (i.e.,  $Re = 0$ ).

## 2. Critical Rayleigh numbers for $Re \geq 350$

Increasing the Reynolds number above  $Re = 350$  sees the emergence of a second unstable mode (local maximum with  $\sigma > 0$ ) for  $Ra$  sufficiently larger than  $Ra_c$ , in contrast with cases for  $Re < 350$ . Examples of a second unstable local maximum for  $Re = 350$  are shown in Fig. 8(a). The instability modes associated with the low and high wavenumber peaks are labeled “peak I” and “peak II,” respectively. The eigenvalue spectra for the wavenumbers corresponding to the maxima with  $Ra = 2470$  are portrayed in Fig. 8(b). Hence, although A, P, and S branches are clearly distinct in the eigenvalue spectra, their corresponding modes portray relatively similar structures exhibiting mixed mode features (i.e., wall and interior). The typical structures of the instability modes are shown in Fig. 8(c).

When increasing  $Ra$  (e.g.,  $Ra = 2600$  and higher), peak I recedes while peak II emerges [see Fig. 8(a)]. The peak II wavenumbers eventually dominate, leading to a single peak at  $Ra = 3 \times 10^3$ . The most unstable wavenumber of  $k = 1.396$  at  $Ra = 3 \times 10^3$  exhibits a mixed mode instability, with its leading eigenvalue positioned on the right-side branch of the eigenvalue spectrum similar to

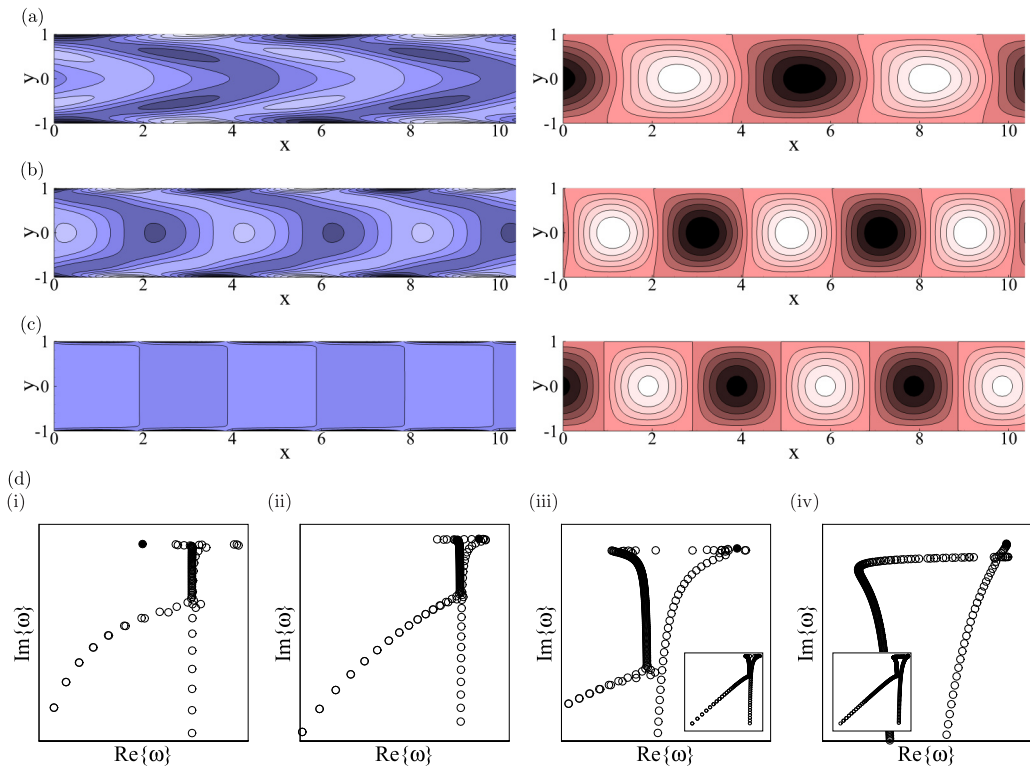


FIG. 7. (Left) Vorticity and (right) temperature perturbation fields at the onset for  $\text{Re} = 300$  with (a)  $H = 10$ , (b)  $H = 100$ , and (c)  $H = 5000$ . Dark and light shading represent negative and positive values, respectively. (d) Eigenvalue spectra of  $k_c$  for  $\text{Re} = 300$  with (i)  $H = 0$ , (ii)  $H = 100$ , (iii)  $H = 1 \times 10^3$ , and (iv)  $H = 1 \times 10^4$ .

the peak II eigenvalue spectrum shown in Fig. 8(b). Further increasing the Rayleigh number causes the vorticity perturbations to only grow along the side wall, recovering a state similar to Fig. 4(d).

The onset of peak I and II instabilities for  $\text{Re} \geq 350$  are highlighted separately in Figs. 9(a) and 9(b), respectively. It is important to note that these curves describe the onset of individual instability modes rather than the neutral stability of a fixed  $\text{Re}$  flow. Figure 10(a) illustrates this for all fixed Reynolds numbers considered in this study, with the corresponding critical wavenumbers shown in panel (b). Consequently, there are discontinuous jumps (marked by dashed lines) in the critical wavenumber curves when the most unstable mode switches from one mode to the other. Similar jumps in unstable critical modes were observed experimentally [52,53] and theoretically predicted [46,51] for the onset of Rayleigh-Bénard convection subjected to the influence of an external magnetic field and to background rotation. In such systems, a magnetic mode with long wavelength competes with a short-wavelength viscous mode. The dominant mode is determined by the dominant force, with a jump in critical wavelength when the balance between these forces reverses.

Referring back to Figs. 9(a) and 9(b), at  $\text{Re} = 350$  the curve for the onset of peak I only spans the low  $H$  regime while peak II is present only in the intermediate and high  $H$  regimes. With increasing Reynolds number up to  $\text{Re} = 10^3$ , peak II extends its presence into lower  $H$  and eventually covers the entire range of  $H$  investigated. In contrast, the onset of peak I remains limited to  $H \lesssim 1$ . This is because the increase in  $H$  leads to an increase in  $\text{Ra}_c$  which results in a wider range of wavenumbers becoming associated with peak II. The transition from peak I dominant wavenumbers to peak II dominance is also visible in the growth rate curves in Fig. 8(a). For the higher range of fixed  $\text{Re}$  investigated in this paper, the curve for the onset of peak II continues to maintain its profile with

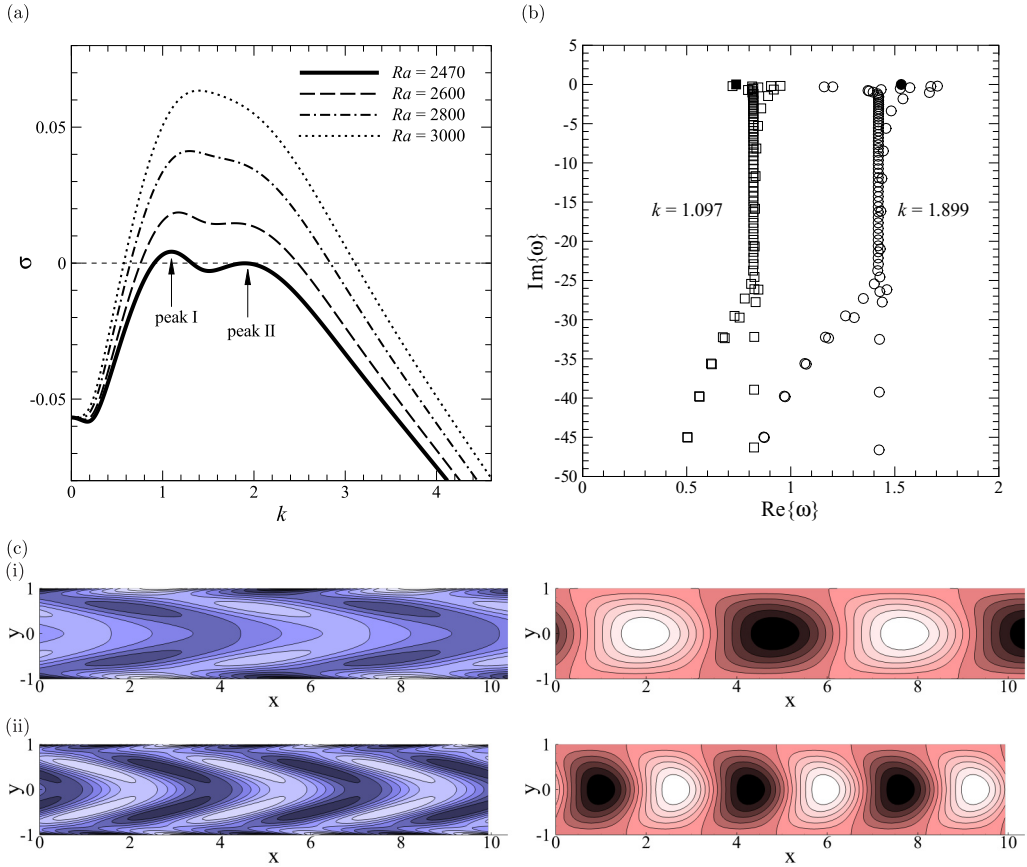


FIG. 8. (a) Growth rate curves of various  $Ra = 2470, 2600, 2800,$  and  $3000$  for  $Re = 350$  and  $H = 10$ . (b) The eigenvalue spectra for  $k = 1.097$  (peak I) and  $k = 1.899$  (peak II) with  $Re = 350$ ,  $Ra = 2470$ , and  $H = 10$ . (c) The vorticity (left panels) and temperature (right panels) perturbation fields for (i)  $k = 1.097$  and (ii)  $k = 1.899$ . Dark and light shading represent negative and positive values, respectively.

increasing  $Re$  throughout the entire  $H$  regime. It turns out that the minima in the curves for the onset of peak II represent an important transition point. Peak II instabilities exhibit mixed modes for  $H$  below this transition point and wall modes for  $H$  above it. Also, at high  $H$  values where  $Ra_c$  becomes independent of  $Re$ , the phase speed of the peak II instability exhibits a linear dependence on the wavenumber (i.e.,  $\text{Re}\{\omega\} \sim k$ ).

Since the critical curves for peak II do not change significantly with  $Re$ , we shall now focus on the peak I instability. A growing dependence on  $H$  is observed as the Reynolds number is increased between  $5 \times 10^3 \leq Re < 10^4$ . This is demonstrated by the transition from a near horizontal curve at  $Re = 5 \times 10^3$  to a vertical curve at  $Re = 10^4$  [Fig. 9(a)]. This transition is a result of shear becoming more significant, thereby disrupting the balance between buoyancy and dissipation. Ultimately, at sufficiently high  $Re$ , the onset of the peak I instability is governed by the balance between shear and Hartmann friction, and becomes independent of  $Ra$ . The critical value of  $H$  and the independence of  $Ra$  agree with Poth rat [15] [see Fig. 3(a)]. The onset of peak I still matches that of  $Ra = 0$  as the Reynolds number is further increased beyond  $Re = 10^4$ . The dominance of shear above  $Re = 10^3$  is supported by the change in eigenvalue spectrum structure of the critical wavenumber. In the shear-dominated state, the eigenvalue spectrum portrays the distinct A, P, and S branches that are exhibited by plane Poiseuille flow.

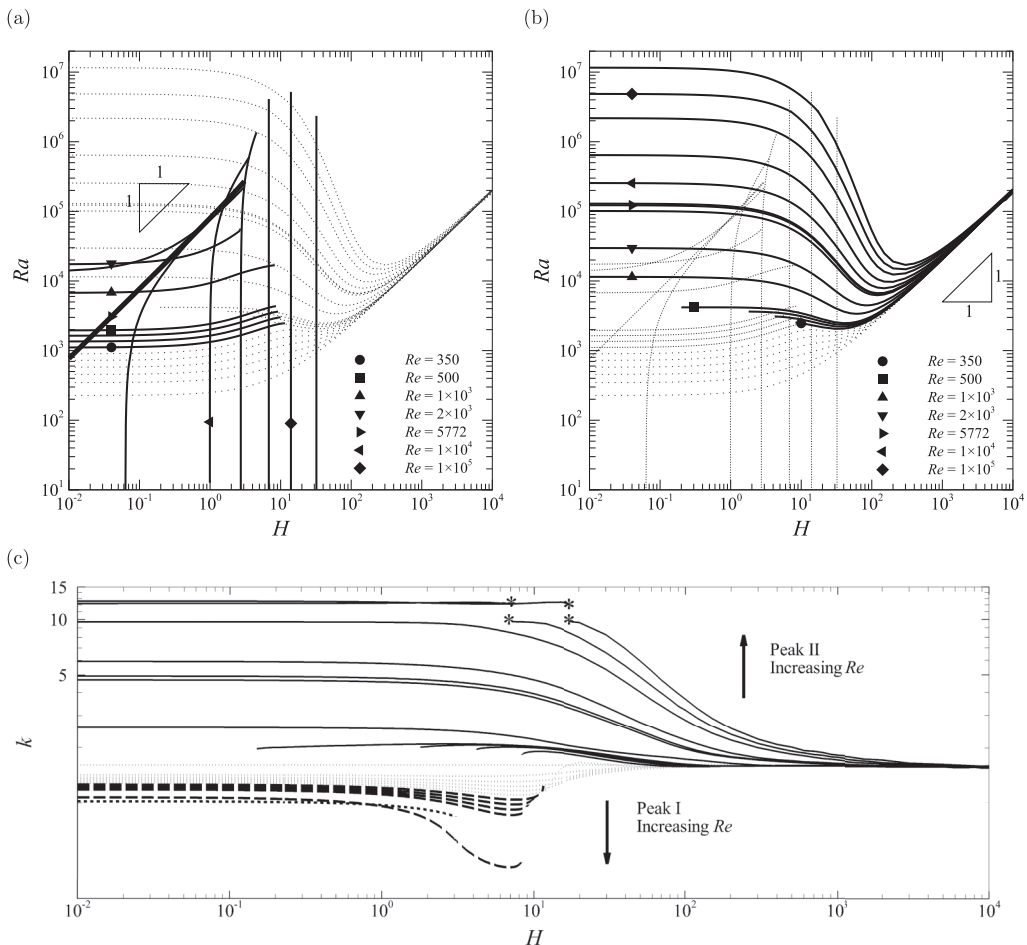


FIG. 9. Critical Rayleigh numbers for the onset of modes corresponding to (a) peak I and (b) peak II for  $0 \leq Re \leq 2 \times 10^5$ . The symbols identify the Reynolds numbers for each curve in panels (a) and (b). The dotted lines are provided for guidance, representing the alternate instability [peak II in panel (a) and peak I in panel (b)] and the single instability for  $0 \leq Re \leq 300$ . The asterisks identify the higher-peak-II wavenumber mode (lower  $H$ ) and lower-peak-II wavenumber mode (higher  $H$ ). (c) The corresponding critical wavenumbers  $k_c$  with long-dashed and solid lines representing peak I and II instabilities, respectively. Data for  $Re = 350, 400, 450, 500, 1 \times 10^3, 2 \times 10^3, 5 \times 10^3, 5772, 6 \times 10^3, 1 \times 10^4, 2 \times 10^4, 5 \times 10^4, 1 \times 10^5, 2 \times 10^5$  are shown.

Interestingly, the critical Rayleigh number for the onset of peak I instability develops a linear dependence with  $H$  at  $Re \approx 5772$ , which is the critical  $Re$  value for linear instability of plane Poiseuille flow. For  $Re \lesssim 5772$  the flow becomes unstable to the peak I instability through the onset of Rayleigh-Bénard-type modes above the critical Rayleigh number at low  $H$ . However, for  $Re \gtrsim 5772$ , the flow becomes unstable to the peak I instability via plane Poiseuille instability below  $H_c$  for all  $Ra > 0$ . As  $Re \rightarrow 5772$ , the critical  $Ra$  and  $H$  values become smaller to approach the point  $(Ra = 0, H = 0)$  in the  $Ra$ - $H$  parameter space. The linear scaling describing this neutral stability reflects the balance between the destabilizing thermal forcing ( $Ra$ ) and stabilizing Hartmann friction ( $H$ ) (see Sec. III A).

The critical wavenumbers for fixed  $0 \leq Re \leq 2 \times 10^5$  are shown in Fig. 9(c) for both peak I and peak II instabilities. All peak I wavenumbers were found to be smaller than the baseline value of  $k \approx 1.5857$  while peak II wavenumbers were larger. As  $H \rightarrow \infty$ , the peak II wavenumbers

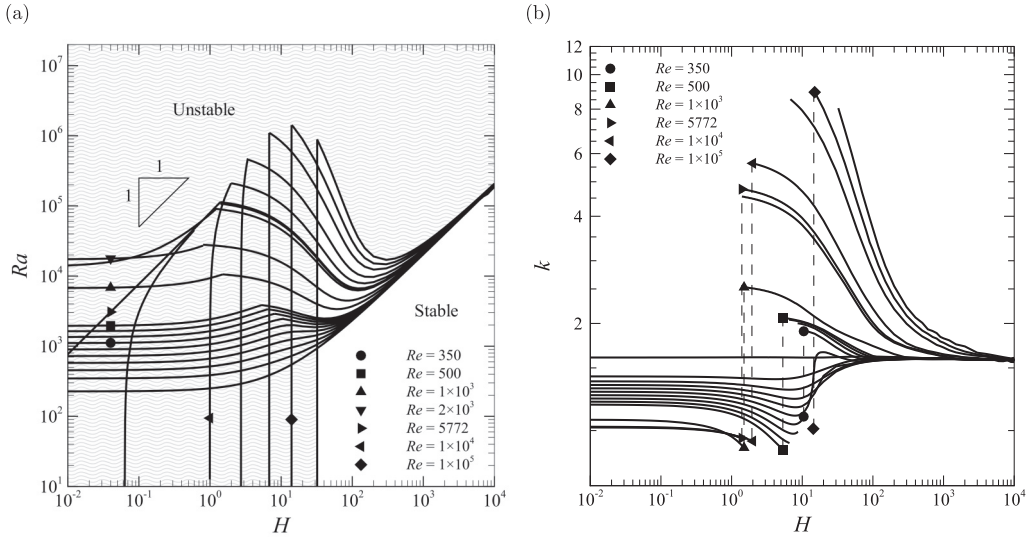


FIG. 10. (a) Neutral stability of  $Ra_c$  as a function of  $H$  for fixed Reynolds numbers  $0 \leq Re \leq 2 \times 10^5$  and (b) corresponding  $k_c$  curves are presented. Unstable conditions are represented by flow conditions above and to the left of all lines for panel (a). The symbols identify the Reynolds numbers for each curve. The dashed lines mark the discontinuous jump in wavenumber for curves highlighted with symbols. The shaded region represents the unstable flow conditions for  $Re = 2 \times 10^5$ .

are asymptotic towards the Reynolds-number independence (i.e.,  $Re = 0$ ). Increasing the Reynolds number leads to a decrease and increase in wavenumber for peaks I and II, respectively. However, the peak I wavenumbers eventually become constant as the system develops a strong and exclusive dependence on  $H$ . This figure explains the discontinuous jumps in preferred wavenumber in the neutral stability curves shown in Fig. 10(b).

Further increasing the Reynolds number beyond  $Re = 1 \times 10^5$  results in the peak II wavenumbers developing two maxima in the growth rate curve as shown in Fig. 11(a). The two newly developed growth rate peaks demonstrate characteristics that are consistent with what has been described for peak II previously. The eigenvalue spectra for each of the three growth rate peaks ( $k = 0.867, 9.742, 11.99$ ) are illustrated in panels (b) and (c). At this Reynolds number, the peak I instability is significantly affected by the shear. In fact, the Rayleigh number no longer has an

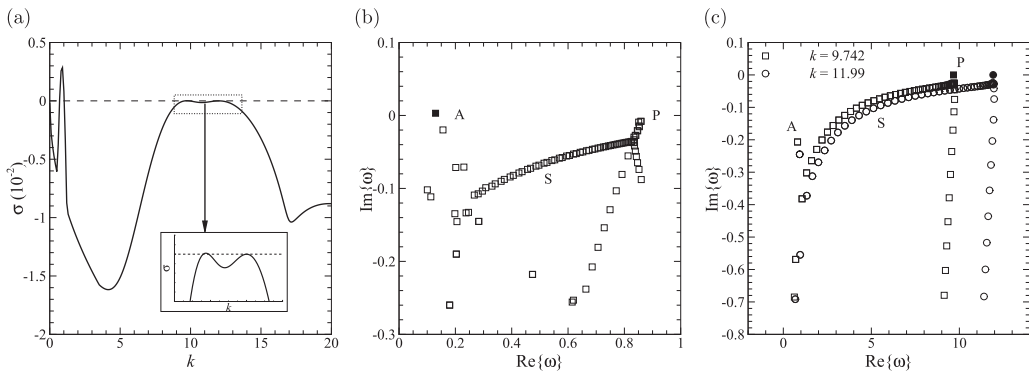


FIG. 11. (a) Growth rate curve for  $H = 7.2$ ,  $Re = 10^5$ , and  $Ra = 2.6934 \times 10^6$ . The eigenvalue spectra of (b)  $k_c = 0.867$  and (c)  $k_c = 9.742$  ( $\square$ ) and  $k_c = 11.99$  ( $\circ$ ). The solid symbols represent the leading eigenvalue.

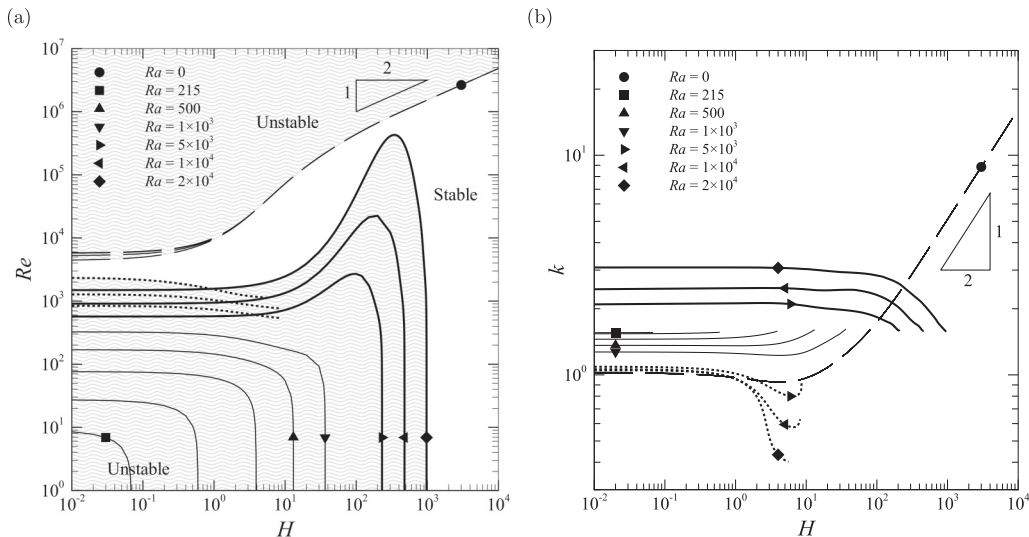


FIG. 12. Stability diagrams of (a)  $Re_c$  and (b)  $k_c$  as a function of  $H$  for fixed Rayleigh numbers  $0 \leq Ra \leq 2 \times 10^4$ . The onset/suppression curves, with long-dashed lines representing shear-dominant instability, thin-solid lines representing thermal-dominant instability, dotted lines representing a low-wavenumber instability (peak I) and thick-solid lines representing a high-wavenumber instability (peak II). The symbols identify the Rayleigh number for each curve. The curves for the onset of shear-dominant instability are only marked for  $Ra = 0$  since the other curves are weakly sensitive over the range of  $Ra$  studied. Unstable conditions are represented by flow conditions above the dashed lines, below the dotted lines, and below all solid lines. Data for  $Ra = 0, 215, 226.67, 300, 500, 1 \times 10^3, 5 \times 10^3, 1 \times 10^4, 2 \times 10^4$  are shown here. Shaded regions represent the unstable flow conditions for  $Ra = 2 \times 10^4$ .

influence on the onset of the peak I instability (i.e., the curve is vertical). Thus, the peak I instability now represents a wall mode rather than the mixed mode observed at lower  $Re$ . The corresponding critical wavenumbers curves for this double peak II mode are shown in Fig. 9(c). The discontinuity in  $k_c$  over the range of  $7 \lesssim H \lesssim 11$  for  $Re = 10^5$  and  $2 \times 10^5$  is caused by a switch in dominance from the higher wavenumber peak associated with peak II to the lower one as  $H$  increases. However, when considering the full neutral stability, the higher-wavenumber peak II instability is never the most unstable [see Fig. 10(b)].

Investigating the stability of fixed Reynolds number flows has revealed a transition from the neutral stability being described by a single instability mechanism for  $Re \leq 300$  to the onset of multiple instability mechanisms for  $Re \geq 350$ . The stability of the system is complex and has shown a preference to wall, center, and mixed modes along the neutral stability curve of a fixed  $Re$  flow. The type of mode observed is dependent on both  $Re$  and  $H$ . A different progression of instability onset is observed with increasing Rayleigh numbers. Hence, the study of fixed  $Ra$  flows exposes an additional transition from a thermal-dominant instability to a shear-dominant instability, which is discussed in the next section.

### C. Critical Reynolds number at finite Rayleigh numbers

In the range of  $0 \leq Ra \leq 1 \times 10^3$ , a single thermal-dominant instability mechanism is observed, while the higher  $Ra$  range ( $Ra \geq 2 \times 10^4$ ) exhibits two instability mechanisms corresponding to peaks I and II described previously. These instability modes are in addition to the shear-dominant instability that is observed for all  $Ra$ . The critical curves and critical wavenumbers as a function of  $H$  are presented in Fig. 12.



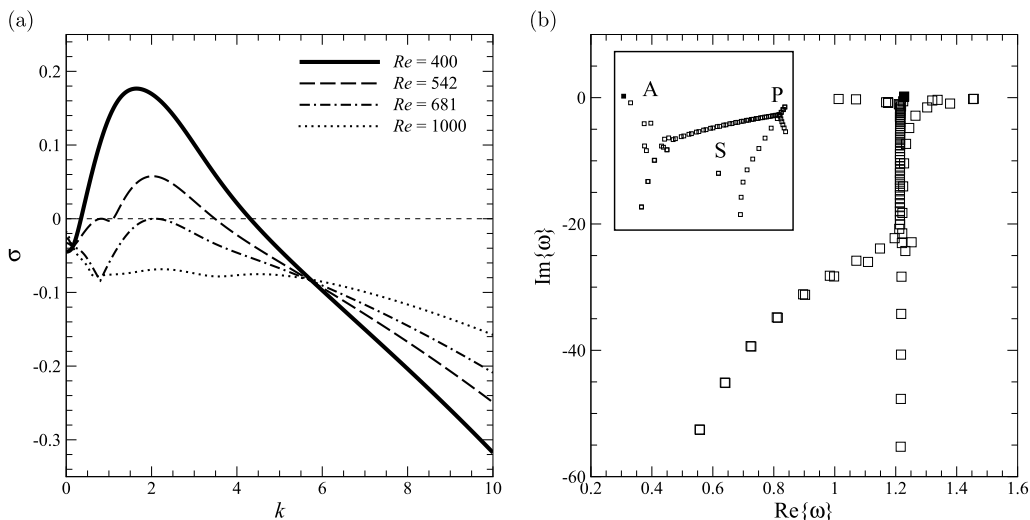


FIG. 13. (a) Growth rate curves for  $H = 1$  and  $Ra = 5 \times 10^3$  for various  $Re$ . The Reynolds numbers are  $Re = 400, 542, 681,$  and  $10^3$ . (b) The eigenvalue spectra corresponding to the wavenumber of peak growth rate for  $Re = 400$  and (inset)  $Re = 57975$ . The solid symbols denote the leading eigenvalue.

### 1. Critical Reynolds numbers for $0 < Ra \leq 1 \times 10^3$

The  $Re_c$  curve associated with the onset of shear-dominant instability at  $Ra = 0$  [see Fig. 3(a)] is strongly insensitive to all  $Ra \leq 2 \times 10^4$  [see dashed lines in Fig. 12(a)]. The instability is a Tollmien-Schlichting wave whose phase speed is linearly dependent on the critical wavenumber (i.e.,  $Re\{\omega\} \sim k$ , not shown here). Since the shear-dominant instability is quite insensitive to  $Ra$  throughout the investigated  $Ra$  range, the remaining sections focus on the thermal-dominant instabilities.

The only Rayleigh number which demonstrates a single instability through the entire range of  $Re$  investigated is  $Ra = 0$ . A second, thermal-dominant instability develops for  $213.47 \leq Ra \leq 1 \times 10^3$  provided that the through-flow is sufficiently weak (this is exemplified by the rapid change in direction of the neutral curves from nearly horizontal at lower  $H$  towards the vertical at the critical  $H$  values). As  $Re \rightarrow 0$  the flow becomes more prone to thermal instability, whereas the flow is more susceptible to shear instability as  $Re \rightarrow \infty$ . Hence, there are two unstable regions marked with shading in Fig. 12(a). This result confirms that increasing the Reynolds number acts to suppress the thermal-dominant transverse rolls. However, this approach also demonstrates a progression from an unstable flow to a stable flow and to an unstable flow again with increasing  $Re$ , which was not observable in previous stability diagrams.

The  $Re$ - $H$  stability diagram shows that thermal disturbances are weakly sensitive to the magnetic damping at low  $H$  but are abruptly suppressed when  $H$  is sufficiently large. Indeed the  $H$  values corresponding to the vertical neutral curves are precisely the critical values found in the  $Ra$ - $H$  regime for  $Re = 0$  [see Fig. 3(b)]. Additionally, the diagram shows that for an appropriate  $Re$ , increasing  $H$  can cause the flow to transition through both stable and unstable states, as has been observed in previous studies [27–29]. The corresponding  $k_c$  curves are shown in Fig. 12(b). The critical wavenumbers associated with the shear-dominant instability are weakly sensitive to  $Ra$  in the range investigated here. The thermal-dominant instability adopts a larger wavenumber structure for  $0 \leq Ra \leq 1 \times 10^3$ , which decreases with increasing  $Ra$ .

### 2. Critical Reynolds numbers for $Ra \geq 5 \times 10^3$

Increasing the Rayleigh number up to  $Ra = 5 \times 10^3$  spawns the onset of multiple instabilities evidenced by the multiple peaks appearing in the growth rate curves. These peaks are respectively

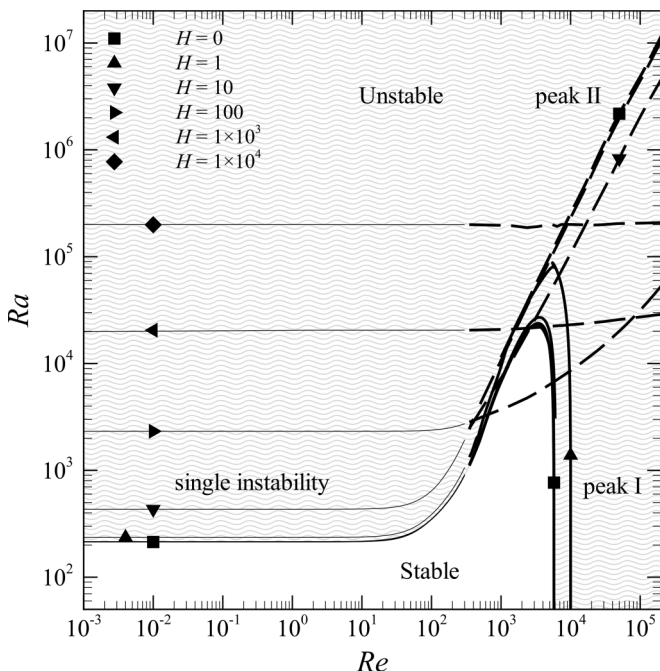


FIG. 14. Stability diagram for  $Ra_c$  against  $Re$  for fixed  $H$ . The symbols identify the modified Hartmann number for each curve. The curves for the onset of single instability are represented by thin solid lines, peak I by thick solid lines, and peak II by dashed lines. Unstable conditions are represented by flow conditions above all dashed and solid lines. Data for  $H = 0.01, 1, 10, 100, 1 \times 10^3, 1 \times 10^4, 1 \times 10^5$  are shown here. Shaded region represents the unstable flow conditions for  $H = 0$ .

the low and high wavenumber peak I and II instabilities observed for fixed Reynolds number flows with  $Re > 350$  (Sec. III B 2). Figure 13(a) illustrates peaks I and II in the growth rate curves for  $Ra = 5 \times 10^3$  with various  $Re$ . The stabilizing effect of the Reynolds number is observed through the decrease in their maximum growth rate with increasing  $Re$ . The single thermal-dominant instability at  $Re = 400$  divides into two instability modes at  $Re = 542$ . Further increases to  $Re$  causes the flow to become stable. The eigenvalue spectrum for  $Re = 400$  is shown in Fig. 13(b) and is representative of all  $Re$  presented in panel (a). Although not shown in the figure, for  $Re \geq Re_c = 57974$  the flow becomes unstable again due to the shear-dominant instability (mode A).

The corresponding critical value of  $Re$  are approximately constant at low  $H$  and increases with increasing  $H$  before suddenly decreasing at higher  $H$ . The maximum point on the curve describing the onset of peak II is significant, as it denotes the transition in mode type (i.e., wall, interior, or mixed). Typically, the flow exhibits a mixed instability mode for  $H$  values to the left of the turning point and a wall mode for  $H$  values to the right of the turning point. This reflects behaviors of fixed- $Re$  flows in that the type of instability changes with increasing  $H$  along the peak II curve. The of emergence peaks I and II at  $Ra = 5 \times 10^3$  introduces one smaller and one larger wavenumber than the shear-dominant instabilities. The critical wavenumbers of these modes are shown in Fig. 12(b) and demonstrate a greater insensitivity to  $H$  and  $Ra$  than shear-dominant instabilities. The critical wavenumber for the peak I instability decreases with increasing  $Ra$  while it increases with increasing  $Ra$  for the peak II instability.

A stability diagram of  $Ra_c$  against  $Re$  for fixed  $H$ , for the single, peak I, and peak II instabilities is presented in Fig. 14. The diagram depicts the critical Rayleigh number demonstrating weak sensitivity to  $H$  for any given  $Re \leq 10$ . This is in agreement with the results of Nicolas *et al.* [10] for an infinite duct aspect ratio and  $Pr = 1 \times 10^{-6}$ . Increasing  $Re$  beyond  $Re = 350$  incurs a deviation from the

TABLE I. Key relationships obtained in this study for a variety of parameter values.

Parameter values	Flow (Pr = 0.022)
Re > 0, Ra = 0, H = 0	Plane Poiseuille flow $Re_c = 5772.22, k_c = 1.02$
Re = 0, Ra > 0, H = 0	Rayleigh-Bénard convection $Ra_c = 213.47, k_c = 1.5582$
Re = 0, Ra = 0, H > 0	Magnetically damped, motionless flow Stable
Re > 0, Ra > 0, H = 0	Poiseuille-Rayleigh-Bénard flow (transverse roll instability) Re ≤ 10 (single): $Ra_c \approx 213, k_c \approx 1.5572$ Re ≥ 1000 (peak II): $Ra_c = (1.4693 \pm 0.3171)Re^{(1.307 \pm 0.0206)}$ , $k_c = 0.3383 Re^{0.3072}$
Re > 0, Ra = 0, H > 0	Fully developed SM82 duct flow As $H \rightarrow \infty, Re_c = 48347H^{1/2}, k_c = 0.1615H^{1/2}$
Re = 0, Ra > 0, H > 0	SM82 flow between horizontal plates heated from below As $H \rightarrow \infty, Ra_c = (21.672 \pm 0.212)H^{(0.991 \pm 0.001)}, k_c = \pi/2$
Re > 0, Ra > 0, H > 0	Poiseuille-Rayleigh-Bénard with SM82 implementation As $H \rightarrow \infty, Re_c = 48347H^{1/2}, k_c = 0.1615H^{1/2}$ As $H \rightarrow \infty, Ra_c = (21.672 \pm 0.212)H^{(0.991 \pm 0.001)}, k_c = \pi/2$

constant  $Ra_c$  value, into a regime where two instability modes are observed. Peak I instability is characterized by an initial increase and then decrease in  $Ra_c$  with increasing Re. In contrast,  $Ra_c$  for the peak II instability increases monotonically with increasing Re. Note that the critical Ra for the onset of the peak II mode initially decreases with increasing  $H$  but begins to increase again beyond  $H = 100$ . It is worth mentioning that qualitatively similar stability diagrams have been produced by Fakhfakh *et al.* [16] for different Prandtl number liquids in a flow heated from below with vertical and horizontal magnetic fields. However, that study investigated an infinite domain where friction from the Hartmann walls is absent, and therefore direct comparisons with the present study cannot be performed.

Several critical relationships can be established for the case of Re > 0, Ra > 0, and H = 0. The single instability takes place at  $Ra_c \approx 213$  and  $k_c \approx 1.55$  for Re ≤ 10. The onset of the peak I instability data does not easily lend itself to being described by a simple function. However, the onset of the peak II instability follows  $Ra_c = (1.4693 \pm 0.3171)Re^{(1.307 \pm 0.0206)}$  and  $k_c = 0.3383 Re^{0.3072}$  for Re ≥ 350. As  $H \rightarrow \infty$ , the stability diagram show that the single and peak II instabilities become independent of Re. These results along with all other key relationships established in this study are highlighted in Table I.

#### IV. CONCLUSIONS

This paper has systematically investigated the linear stability of Poiseuille-Rayleigh-Bénard flows under the effect of a transverse magnetic field. This study has extended the investigation of Pothérat [15] by introducing vertical thermal stratification into the system. A quasi-two-dimensional model following Sommeria and Moreau [2] was used to describe the duct flow, which included the modeling of the friction induced by the Hartmann layers. Since the system is governed by three nondimensional parameters, two primary approaches were undertaken to understand the linear stability of the flow: fixing either Re or Ra and then determining the corresponding  $Ra_c$  or  $Re_c$ .

The onset and suppression of multiple instabilities were determined and mapped onto Re–H and Ra–H stability diagrams over  $0 \leq H \leq 10^4$ . A remarkable consequence of the competition between several instability mechanisms is the existence of a sharp discontinuity in critical wavenumber when increasing  $H$  through the changeover point between the two dominant modes. The discontinuity takes place with increasing  $H$  and strongly resembles that observed when switching between magnetic and viscous modes both in plane and confined rotating magnetoconvection [51,53,54]. A second

discontinuous drop in wavenumber with increasing  $H$  was also observed at very high  $Re$ , though these two modes exhibited peak II characteristics. Asymptotic relationships described by  $Re_c \propto H^{1/2}$  and  $Ra_c \propto H$  for  $H \rightarrow \infty$  were obtained. In the former case, the stability of the flow is governed by the individual Shercliff layers, while in the latter case the stability is dictated by the balance between buoyancy and Hartmann friction.

The disturbance fields for vorticity and temperature depicted two distinct regions for growth, namely within the Shercliff layers and the interior region. Generally, it was found that instabilities manifesting along the side walls and in the interior flow (i.e., mixed modes) only existed at low  $H$ . A strong magnetic field was found to suppress the interior structures leaving only wall modes. The inclusion of thermal stratification has been shown to be able to encourage mixing within the interior of the duct which would otherwise be limited to the boundary layers.

#### ACKNOWLEDGMENTS

The authors thank TzeKih Tsai and Wisam K. Hussam from Monash University for their help in validating the one-dimensional linear stability solver used in the present study. This research was supported by Australian Research Council Discovery Grants No. DP120100153 and No. DP150102920. A.P. acknowledges support from the Royal Society under the Wolfson Research Merit Award Scheme (Grant No. WM140032). Additional assistance was provided through high-performance computing time allocations from the National Computational Infrastructure (NCI), the Victorian Life Sciences Computation Initiative (VLSCI), and the Monash SunGRID.

#### APPENDIX: GOVERNING EQUATIONS FOR CASES OF $Ra = 0$ and $Re = 0$

The SM82 equations are coupled with a thermal transport equation through a Boussinesq approximation to describe the MHD duct flow with vertical thermal stratification (i.e.,  $Re > 0$ ,  $Ra > 0$ ). These equations are given in dimensional form as

$$\frac{\partial \mathbf{u}}{\partial t} + (\mathbf{u} \cdot \nabla) \mathbf{u} = -\frac{1}{\rho} \nabla p + \nu \nabla^2 \mathbf{u} - \frac{n}{t_H} \mathbf{u} - \alpha \mathbf{g} \theta, \quad (\text{A1a})$$

$$\frac{\partial \theta}{\partial t} + (\mathbf{u} \cdot \nabla) \theta = \kappa \nabla^2 \theta, \quad (\text{A1b})$$

$$\nabla \cdot \mathbf{u} = 0, \quad (\text{A1c})$$

where  $\mathbf{u}$  is the velocity vector,  $t$  is time,  $p$  is pressure,  $\mathbf{g}$  is the gravitational acceleration acting in the negative  $y$  direction, and  $t_H = (a/B)\sqrt{\rho/(\xi\nu)}$  as the Hartmann damping time.

The nondimensional equations for the case of no heating ( $Ra = 0$ ),

$$\frac{\partial \mathbf{u}}{\partial t} + (\mathbf{u} \cdot \nabla) \mathbf{u} = -\nabla p + \frac{1}{Re} \nabla^2 \mathbf{u} - \frac{H}{Re} \mathbf{u}, \quad (\text{A2a})$$

$$\nabla \cdot \mathbf{u} = 0, \quad (\text{A2b})$$

are obtained by normalizing lengths by  $L$ , velocity by  $U_0$ , time by  $L/U_0$ , and pressure by  $\rho U_0^2$ .

For no through-flow ( $Re = 0$ ), the nondimensional equations

$$\frac{\partial \mathbf{u}}{\partial t} + (\mathbf{u} \cdot \nabla) \mathbf{u} = -\nabla p + Pr \nabla^2 \mathbf{u} - Pr H \mathbf{u} + Pr Ra \theta \hat{\mathbf{e}}_y, \quad (\text{A3a})$$

$$\frac{\partial \theta}{\partial t} + (\mathbf{u} \cdot \nabla) \theta = \nabla^2 \theta, \quad (\text{A3b})$$

$$\nabla \cdot \mathbf{u} = 0, \quad (\text{A3c})$$

are obtained by normalizing lengths by  $L$ , velocity by  $\kappa/L$ , time by  $L^2/\kappa$ , pressure by  $\rho(\kappa/L)^2$ , and temperature by  $\Delta\theta$ .

The linearized governing equations for the  $Re = 0$  and  $Ra = 0$  cases can be obtained using the same derivation process described in Sec. II C. The corresponding eigenvalue equations for the  $Ra = 0$  and  $Re = 0$  cases are respectively given by

$$\frac{1}{Re}(D^2 - k^2)^2 \tilde{v} + ik\bar{u}''\tilde{v} - ik\bar{u}(D^2 - k^2)\tilde{v} - \frac{H}{Re}(D^2 - k^2)\tilde{v} = -i\omega(D^2 - k^2)\tilde{v}, \quad (A4)$$

and

$$Pr(D^2 - k^2)^2 \tilde{v} - H(D^2 - k^2)\tilde{v} - Pr Ra k^2 \tilde{\theta} = -i\omega(D^2 - k^2)\tilde{v}, \quad (A5a)$$

$$-\tilde{\theta}'\tilde{v} + (D^2 - k^2)\tilde{\theta} = -i\omega\tilde{\theta}. \quad (A5b)$$

- 
- [1] M. Abdou, N. B. Morley, S. Smolentsev, A. Ying, S. Malang, A. Rowcliffe, and M. Ulrickson, Blanket/first wall challenges and required R&D on the pathway to DEMO, *Fusion Eng. Des.* **100**, 2 (2015).
- [2] J. Sommeria and R. Moreau, Why, how, and when, MHD turbulence becomes two-dimensional, *J. Fluid Mech.* **118**, 507 (1982).
- [3] P. G. Drazin and W. H. Reid, *Hydrodynamic Stability* (Cambridge University Press, Cambridge, UK, 2004).
- [4] K. S. Gage and W. H. Reid, The stability of thermally stratified plane Poiseuille flow, *J. Fluid Mech.* **33**, 21 (1968).
- [5] M. Yasuo and U. Yutaka, Forced convective heat transfer between horizontal flat plates, *Int. J. Heat Mass Transfer* **9**, 803 (1966).
- [6] M. Akiyama, G.-J. Hwang, and K. C. Cheng, Experiments on the onset of longitudinal vortices in laminar forced convection between horizontal plates, *J. Heat Transf.* **93**, 335 (1971).
- [7] K. Fukui, M. Nakajima, and H. Ueda, The longitudinal vortex and its effects on the transport processes in combined free and forced laminar convection between horizontal and inclined parallel plates, *Int. J. Heat Mass Transf.* **26**, 109 (1983).
- [8] H. W. Müller, M. Lücke, and M. Kamps, The effect of throughflow on Rayleigh-Bénard convective rolls, in *Ordered and Turbulent Patterns in Taylor-Couette Flow* (Springer, Berlin, 1992), pp. 187–196.
- [9] P. Carriere and P. A. Monkewitz, Convective versus absolute instability in mixed Rayleigh-Bénard-Poiseuille convection, *J. Fluid Mech.* **384**, 243 (1999).
- [10] X. Nicolas, J.-M. Luijkx, and J.-K. Platten, Linear stability of mixed convection flows in horizontal rectangular channels of finite transversal extension heated from below, *Int. J. Heat Mass Transf.* **43**, 589 (2000).
- [11] E. Grandjean and P. A. Monkewitz, Experimental investigation into localized instabilities of mixed Rayleigh-Bénard-Poiseuille convection, *J. Fluid Mech.* **640**, 401 (2009).
- [12] S. Mergui, X. Nicolas, and S. Hirata, Sidewall and thermal boundary condition effects on the evolution of longitudinal rolls in Rayleigh-Bénard-Poiseuille convection, *Phys. Fluids* **23**, 084101 (2011).
- [13] X. Nicolas, N. Zouei, and S. Xin, Influence of a white noise at channel inlet on the parallel and wavy convective instabilities of Poiseuille-Rayleigh-Bénard flows, *Phys. Fluids* **24**, 084101 (2012).
- [14] J.-M. Luijkx, J. K. Platten, and J. Cl. Legros, On the existence of thermoconvective rolls, transverse to a superimposed mean Poiseuille flow, *Int. J. Heat Mass Transf.* **24**, 1287 (1981).
- [15] A. Pothérat, Quasi-two-dimensional perturbations in duct flows under transverse magnetic field, *Phys. Fluids* **19**, 074104 (2007).
- [16] W. Fakhfakh, S. Kaddeche, D. Henry, and H. B. Hadid, Selective control of Poiseuille-Rayleigh-Bénard instabilities by a spanwise magnetic field, *Phys. Fluids* **22**, 034103 (2010).
- [17] D. Krasnov, O. Zikanov, and T. Boeck, Numerical study of magnetohydrodynamic duct flow at high Reynolds and Hartmann numbers, *J. Fluid Mech.* **704**, 421 (2012).
- [18] J. Priede, S. Aleksandrova, and S. Molokov, Linear stability of magnetohydrodynamic flow in a perfectly conducting rectangular duct, *J. Fluid Mech.* **708**, 111 (2012).

- [19] H. S. Yoon, H. H. Chun, M. Y. Ha, and H. G. Lee, A numerical study on the fluid flow and heat transfer around a circular cylinder in an aligned magnetic field, *Int. J. Heat Mass Transf.* **47**, 4075 (2004).
- [20] W. K. Hussam, M. C. Thompson, and G. J. Sheard, Dynamics and heat transfer in a quasi-two-dimensional MHD flow past a circular cylinder in a duct at high Hartmann number, *Int. J. Heat Mass Transf.* **54**, 1091 (2011).
- [21] O. G. W. Cassells, W. K. Hussam, and G. J. Sheard, Heat transfer enhancement using rectangular vortex promoters in confined quasi-two-dimensional magnetohydrodynamic flows, *Int. J. Heat Mass Transf.* **93**, 186 (2016).
- [22] A. H. A. Hamid, W. K. Hussam, and G. J. Sheard, Combining an obstacle and electrically driven vortices to enhance heat transfer in a quasi-two-dimensional MHD duct flow, *J. Fluid Mech.* **792**, 364 (2016).
- [23] W. G. Früh and A. H. Nielsen, On the origin of time-dependent behaviour in a barotropically unstable shear layer, *Nonlinear Proc. Geophys.* **10**, 289 (2003).
- [24] T. Vo, L. Montabone, P. L. Read, and G. J. Sheard, Non-axisymmetric flows in a differential-disk rotating system, *J. Fluid Mech.* **775**, 349 (2015).
- [25] M. Duran-Matute, J. Albagnac, L. P. J. Kamp, and G. J. F. Van Heijst, Dynamics and structure of decaying shallow dipolar vortices, *Phys. Fluids* **22**, 116606 (2010).
- [26] D. Krasnov, M. Rossi, O. Zikanov, and T. Boeck, Optimal growth and transition to turbulence in channel flow with spanwise magnetic field, *J. Fluid Mech.* **596**, 73 (2008).
- [27] O. Zikanov, Y. I. Listratov, and V. G. Sviridov, Natural convection in horizontal pipe flow with a strong transverse magnetic field, *J. Fluid Mech.* **720**, 486 (2013).
- [28] L. G. Genin, V. G. Zhilin, Y. P. Ivochkin, N. G. Razuvanov, I. A. Belyaev, Y. I. Listratov, and V. G. Sviridov, Temperature fluctuations in a heated horizontal tube affected by transverse magnetic field, in *Fundamental and Applied MHD, Proceedings of the 8th International PAMIR Conference, Borgo, Corsica (2011)*, pp. 37–41.
- [29] I. A. Belyaev, Y. P. Ivochkin, Y. I. Listratov, N. G. Razuvanov, and V. G. Sviridov, Temperature fluctuations in a liquid metal MHD-flow in a horizontal inhomogeneously heated tube, *High Temp.* **53**, 734 (2015).
- [30] N. Vetcha, S. Smolentsev, M. Abdou, and R. Moreau, Study of instabilities and quasi-two-dimensional turbulence in volumetrically heated magnetohydrodynamic flows in a vertical rectangular duct, *Phys. Fluids* **25**, 024102 (2013).
- [31] X. Zhang and O. Zikanov, Mixed convection in a horizontal duct with bottom heating and strong transverse magnetic field, *J. Fluid Mech.* **757**, 33 (2014).
- [32] M. Takashima, The stability of the modified plane Poiseuille flow in the presence of a transverse magnetic field, *Fluid Dyn. Res.* **17**, 293 (1996).
- [33] R. C. Lock, The stability of the flow of an electrically conducting fluid between parallel planes under a transverse magnetic field, *Proc. R. Soc. London A* **233**, 105 (1955).
- [34] P. Moresco and T. Alboussière, Experimental study of the instability of the Hartmann layer, *J. Fluid Mech.* **504**, 167 (2004).
- [35] A. Pothérat, J. Sommeria, and R. Moreau, Numerical simulations of an effective two-dimensional model for flows with a transverse magnetic field, *J. Fluid Mech.* **534**, 115 (2005).
- [36] N. B. Morley, J. Burris, L. C. Cadwallader, and M. D. Nornberg, GaInSn usage in the research laboratory, *Rev. Sci. Instrum.* **79**, 056107 (2008).
- [37] J. Sommeria, Electrically driven vortices in a strong magnetic field, *J. Fluid Mech.* **189**, 553 (1988).
- [38] D. S. Krasnov, E. Zienicke, O. Zikanov, T. Boeck, and A. Thess, Numerical study of the instability of the Hartmann layer, *J. Fluid Mech.* **504**, 183 (2004).
- [39] T. Tsai, W. K. Hussam, A. Fouras, and G. J. Sheard, The origin of instability in enclosed horizontally driven convection, *Int. J. Heat Mass Transf.* **94**, 509 (2016).
- [40] L. N. Trefethen, *Spectral Methods in MATLAB* (SIAM, Philadelphia, 2000).
- [41] J. A. Weideman and S. C. Reddy, A MATLAB differentiation matrix suite, *ACM Trans. Math. Software (TOMS)* **26**, 465 (2000).
- [42] P. J. Schmid and D. S. Henningson, *Stability and Transition in Shear Flows*, Applied Mathematical Sciences Vol. 142 (Springer-Verlag, Berlin, 2001).

- [43] G. D. McBain, T. H. Chubb, and S. W. Armfield, Numerical solution of the Orr–Sommerfeld equation using the viscous Green function and split-Gaussian quadrature, *J. Comput. Appl. Math.* **224**, 397 (2009).
- [44] L. M. Mack, A numerical study of the temporal eigenvalue spectrum of the Blasius boundary layer, *J. Fluid Mech.* **73**, 497 (1976).
- [45] W. H. Reid and D. L. Harris, Some further results on the Bénard problem, *Phys. Fluids* **1**, 102 (1958).
- [46] S. Chandrasekhar, *Hydrodynamic and Hydromagnetic Stability* (Oxford University Press, Oxford, 1961).
- [47] U. Burr and U. Müller, Rayleigh–Bénard convection in liquid metal layers under the influence of a horizontal magnetic field, *J. Fluid Mech.* **453**, 345 (2002).
- [48] C. Mistrangelo and L. Bühler, Magneto-convective instabilities in horizontal cavities, *Phys. Fluids* **28**, 024104 (2016).
- [49] O. Andreev, A. Thess, and Ch. Haberstroh, Visualization of magnetoconvection, *Phys. Fluids* **15**, 3886 (2003).
- [50] T. Hattori, J. C. Patterson, and C. Lei, On the stability of internally heated natural convection due to the absorption of radiation in a laterally confined fluid layer with a horizontal throughflow, *Int. J. Heat Mass Transf.* **81**, 846 (2015).
- [51] K. Aujogue, A. Pothérat, and B. Sreenivasan, Onset of plane layer magnetoconvection at low Ekman number, *Phys. Fluids* **27**, 106602 (2015).
- [52] Y. Nakagawa, Experiments on the instability of a layer of mercury heated from below and subject to the simultaneous action of a magnetic field and rotation, *Proc. R. Soc. Lond. A* **242**, 81 (1957).
- [53] K. Aujogue, A. Pothérat, I. Bates, F. Debray, and B. Sreenivasan, Little Earth experiment: An instrument to model planetary cores, *Rev. Sci. Instrum.* **87**, 084502 (2016).
- [54] Y. Nakagawa, An experiment on the inhibition of thermal convection by a magnetic field, *Nature (London)* **175**, 417 (1955).